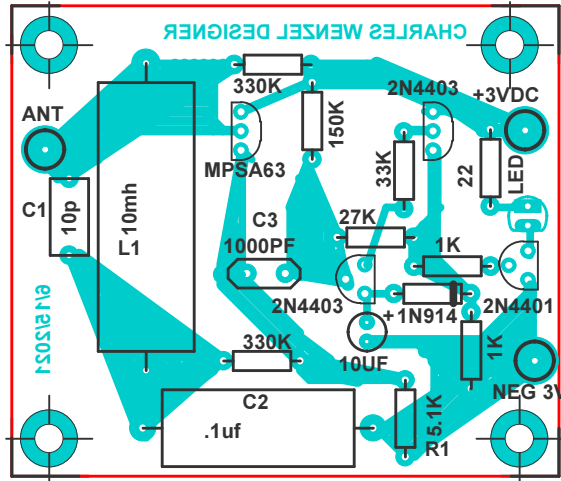


# ALVIN P. SCHMITT IMPROVED LIGHTING DETECTOR

- C1 1 nf
- C2 33nf
- C3 1.5nf
- L1 PER NOTES ON WEB SITE
- R1 2.7K



The magnetic antenna version can be build on the same board with the following component changes and the coil L1 per the instructions at : [techlib.com/electronics/lightingnew.HTM#magnetic](http://techlib.com/electronics/lightingnew.HTM#magnetic)