

RA-20A-2 Remote Antenna Switch

Pre-production Rev P-A

11-21-11

JLK

Camera ready artwork;

1. Control Assy PWB Foil (PWB RA20A220)
2. Control Assy PWB Legend
3. Control Assy RA20A200 Component Locator
4. Remote Assy PWB Foil (PWB RA20A221)
5. Remote Assy PWB Legend
6. Remote Assy RA20A201 Component Locator

Printed circuit boards designed for both Control and Remote Assemblies. Settled on over-current protection using \$0.30 Raychem PTC which is less expensive than fuse or incandescent bulb and automatically resets after an overload.

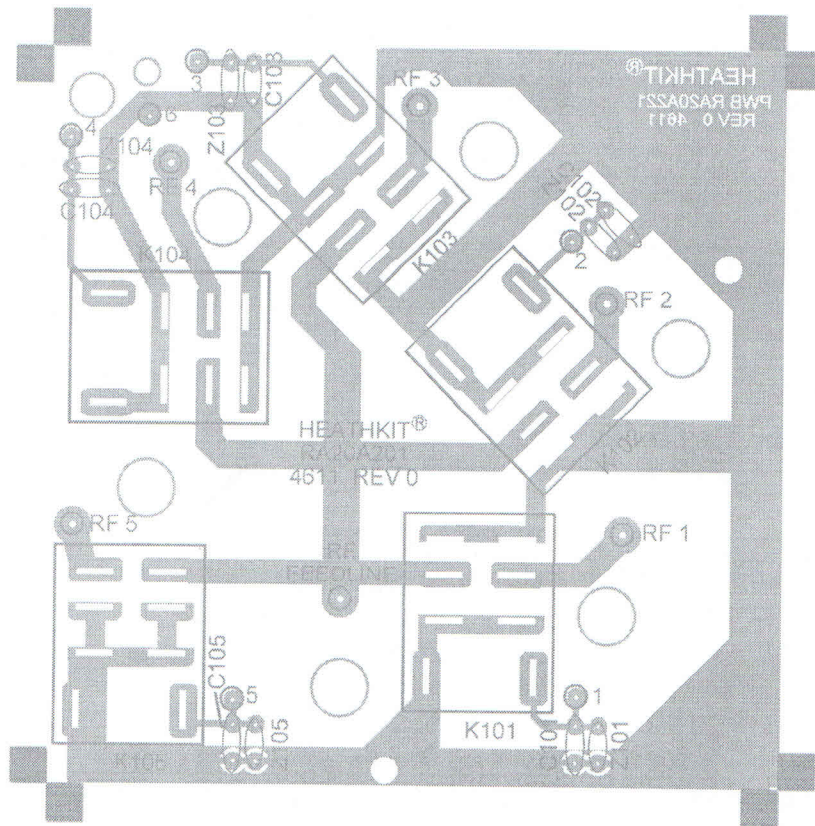
Revised schematic and L/M should be complete by 11-22-11.

Disclaimer:

This document, associated technical descriptions and design information comprise a project done exclusively for Heathkit Company, Inc.. This is an original work intended to function properly and be accurately presented as described herein; however, no part of this project is offered to be free of patent infringements, or represented to be fit for any particular use. The use of this document is restricted to Heathkit Company Inc. proprietary use.

RA-20A-2 Remote Antenna Switch

HEATHKIT®
RA-20A-2 ANTENNA SWITCH
REMOTE ASSEMBLY RA20A201
COMPONENT LOCATOR
VIEWED FROM COMPONENT SIDE
(FOIL APPEARS AS VIEWED THRU BRD)
SCALE 1:1 4.00" X 4.00" FLAG TO FLAG
JLK 11-19-11 REV 0



RA-20A-2 Remote Antenna Switch

RA-20A-2 ANTENNA SWITCH
 CONTROL ASSEMBLY RA20A200
 COMPONENT LOCATOR
 VIEWED FROM COMPONENT SIDE
 (FOIL APPEARS AS VIEWED THRU BRD)
 SCALE 1:1 2.375" X 4.375" FLAG TO FLAG
 JLK 11-21-11 REV 0

